

## CARE FOLLOWING TREATMENT

Once the root canal treatment has been completed, you should be aware of the following considerations:

### DISCOLOURATION

Occasionally an endodontically treated tooth may undergo a change in colour. While this is of no great medical concern, you may be interested in having the tooth bleached. Be sure to ask us about our tooth whitening programs.

### BRITTLENESS

A non-vital (endodontically treated) tooth is more brittle than a vital one, and is more susceptible to fracture. Therefore, we recommend that your root canal tooth be crowned (capped) following treatment.

---

*I was so worried about having a root canal, but Impressions Dental Centres made it pain free and easy!*

*Conrad M., 58*

---

## IF YOU HAVE ANY FURTHER QUESTIONS

Throughout your root canal treatment, you may have many questions or concerns not covered in this document.

We will make every effort to ensure your comfort during your root canal treatment - and we are more than pleased to answer any questions that you may have.

Our concern is your comfort and confidence. Our goal is to help preserve your natural smile and teeth for a lifetime.

## TWO GREAT OFFICES. ONE AMAZING TEAM.

*Setting The Standard In Oral Health Care*

### MADOC

52 St. Lawrence Street East  
Tri-Area Medical Centre  
Upper Floor Suite A  
Madoc, ON K0K 2K0

t 613-473-2142  
tf 1-888-623-6233

### DESERONTO

444 Main Street  
Deseronto Dental Centre  
Deseronto, ON K0K 1X0

t 613-396-2974  
tf 1-888-228-9939

Call our offices today to learn more about [Root Canals](#) as well as other innovative services and treatments that may be available.

**VISIT OUR WEBSITE  
OR CALL TO BOOK  
YOUR APPOINTMENT**

[www.impressionsdentalcentres.com](http://www.impressionsdentalcentres.com)



**IMPRESSIONS  
DENTAL CENTRES**

## ROOT CANALS

*Your Patient Guide*



### DID YOU KNOW?

Root canal (endodontic) therapy treats disorders of the nerve (pulp) of the tooth. In the past, a diseased tooth would have to be removed - however, in 95% of all cases today, this is not true.



**IMPRESSIONS  
DENTAL CENTRES**

# WHAT MAKES A ROOT CANAL NECESSARY?

There are several reasons why you may need a root canal. Some of the more common are:

- Physical irritation caused by deep decay or a very large filling
- Severe gum disease
- Trauma, such as a physical blow to a tooth or a constant striking of a tooth against the opposite jaw

# WHAT MAKES A ROOT CANAL NECESSARY?

Regardless of the initial cause, the tooth pulp becomes irritated and an abscess (infection) occurs. Bacteria from your saliva grow within the tooth pulp, causing pressure and pain. Eventually the pulp dies, causing the bone around the tooth to be destroyed.

# WHAT'S GOING TO HAPPEN?

Once it has been determined (with X-Rays and/or clinical examination) that root canal treatment is necessary, you will be scheduled for one or more appointments. It is key that these appointments are kept - to prevent delays in treatment and healing. It is also essential that you take all antibiotics and medications prescribed. Should you experience pain that cannot be controlled with the prescription medications, **CALL OUR OFFICE IMMEDIATELY** - this is unusual, but a precaution.

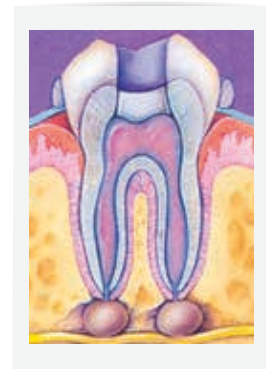
The root canal area inside your tooth is cleaned, enlarged and shaped. Then, depending on your individual case, the root canal(s) and pulp chamber may be permanently filled and sealed. In some cases, a temporary medication is placed in the tooth to control bacterial growth and reduce infection. Most often, a provisional filling is placed in the opening of the tooth until the next visit. In some cases, the tooth may be left open. This allows the infection to drain.

At the next appointment, the inside of the tooth is sterilized to remove any remaining bacteria. Throughout the root canal procedure we take X-Rays to ensure that all of the infected pulp is removed and that the walls inside the canal are smooth. Only then are the root canal and pulp chamber permanently sealed.

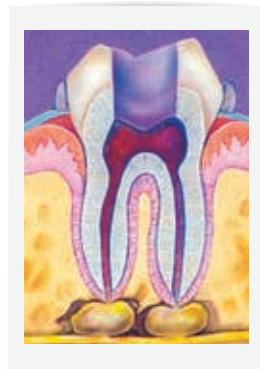
Finally, the tooth is fully restored to chewing functions, most often with a full crown.

# HOW YOUR TOOTH CAN BE SAVED

An opening is made through the crown into the pulp. (Your tooth may be numbed prior to this procedure) The diseased pulp is then carefully removed.



AN OPENING IS MADE THROUGH THE CROWN INTO THE PULP CHAMBER

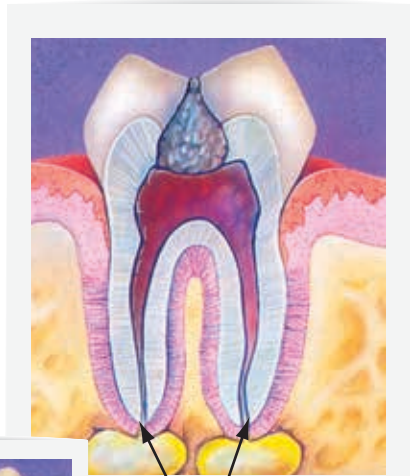


THE PULP IS REMOVED AND ROOT CANALS ARE CLEANED, ENLARGED AND SHAPED



THE PULP CHAMBER AND ROOT CANALS ARE FILLED AND SEALED

TOOTH REQUIRING ROOT CANAL THERAPY



ABSCESSSES



HEALTHY TOOTH

THE CROWN OF THE TOOTH IS RESTORED

